

SOS2 Antibody (N-term)
Affinity Purified Rabbit Polyclonal Antibody (Pab)
Catalog # AP11762A**Specification**

SOS2 Antibody (N-term) - Product Information

Application	FC, WB,E
Primary Accession	Q07890
Other Accession	Q02384 , NP_008870.2
Reactivity	Human
Predicted	Mouse
Host	Rabbit
Clonality	Polyclonal
Isotype	Rabbit IgG
Calculated MW	152979
Antigen Region	188-215

SOS2 Antibody (N-term) - Additional Information**Gene ID** 6655**Other Names**

Son of sevenless homolog 2, SOS-2, SOS2

Target/Specificity

This SOS2 antibody is generated from rabbits immunized with a KLH conjugated synthetic peptide between 188-215 amino acids from the N-terminal region of human SOS2.

Dilution

FC~~1:10~50

WB~~1:1000

E~~Use at an assay dependent concentration.

Format

Purified polyclonal antibody supplied in PBS with 0.09% (W/V) sodium azide. This antibody is purified through a protein A column, followed by peptide affinity purification.

Storage

Maintain refrigerated at 2-8°C for up to 2 weeks. For long term storage store at -20°C in small aliquots to prevent freeze-thaw cycles.

Precautions

SOS2 Antibody (N-term) is for research use only and not for use in diagnostic or therapeutic procedures.

SOS2 Antibody (N-term) - Protein Information**Name** SOS2

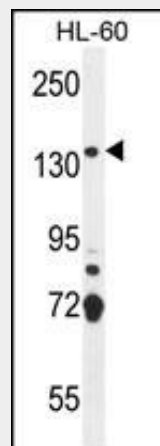
Function Promotes the exchange of Ras-bound GDP by GTP.

SOS2 Antibody (N-term) - Protocols

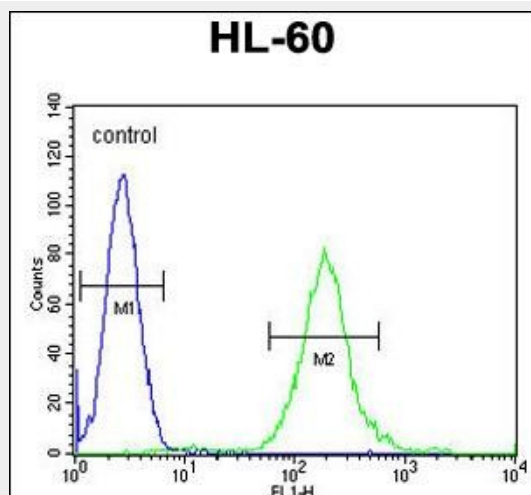
Provided below are standard protocols that you may find useful for product applications.

- [Western Blot](#)
- [Blocking Peptides](#)
- [Dot Blot](#)
- [Immunohistochemistry](#)
- [Immunofluorescence](#)
- [Immunoprecipitation](#)
- [Flow Cytometry](#)
- [Cell Culture](#)

SOS2 Antibody (N-term) - Images



SOS2 Antibody (N-term) (Cat. #AP11762a) western blot analysis in HL-60 cell line lysates (35ug/lane). This demonstrates the SOS2 antibody detected the SOS2 protein (arrow).



SOS2 Antibody (N-term) (Cat. #AP11762a) flow cytometric analysis of HL-60 cells (right histogram) compared to a negative control cell (left histogram). FITC-conjugated goat-anti-rabbit secondary antibodies were used for the analysis.

SOS2 Antibody (N-term) - Background

SOS2 promotes the exchange of Ras-bound GDP by GTP (By similarity).

SOS2 Antibody (N-term) - References

- Takefuji, M., et al. J. Hum. Genet. 55(1):42-49(2010)
Kurada, B.R., et al. J. Biol. Chem. 284(20):13533-13541(2009)
Hamilton, G., et al. Am. J. Med. Genet. B Neuropsychiatr. Genet. 144B (4), 508-516 (2007) :
Wu, C., et al. Proteomics 7(11):1775-1785(2007)
Roberts, A.E., et al. Nat. Genet. 39(1):70-74(2007)